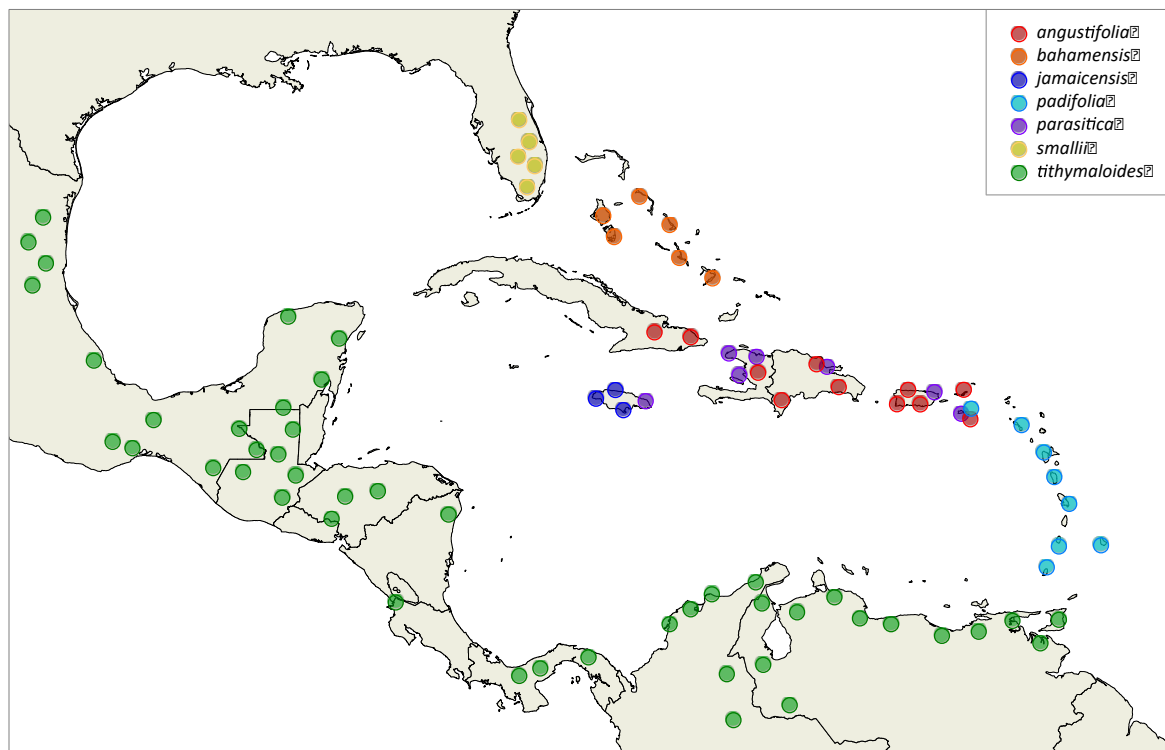


Supplementary file 1. Characteristics of the Caribbean subspecies of *E. tithymaloides* L.



Supplementary file 1.1. Geographic distribution of the Caribbean subspecies of *E. tithymaloides* (based on Dressler 1957).

Supplementary file 1.2. Geographic distribution, habit, and morphology of the seven Caribbean subspecies of *E. tithymaloides* L. proposed by Dressler (1957).

| Subspecies | Distribution | Habit | Leaf shape | Inflorescence (cyathium) |
|----------------------|--|--|--|--------------------------------|
| <i>angustifolia</i> | East of Cuba, Greater Antilles, Virgin Islands | scandent shrub (0.8–3 m), branching at base with slender stems | lanceolate, apex variable | 6–9 mm, short and very small |
| <i>bahamensis</i> | Bahamas | shrub (0.7–1.5 m), branching at base | lanceolate | 7.5–12 mm |
| <i>jamaicensis</i> | Jamaica | shrub (0.4–2 m), branching at base | elliptic, can be microphylls | 7.5–11.5 mm, indument variable |
| <i>padifolia</i> | Lesser Antilles, St Croix | sturdy shrub with main stem, or small treelet | obovate, apex retuse, base decurrent | 9.5–12 mm |
| <i>parasitica</i> | Greater Antilles, St Croix | shrub (0.8–2 m), branches straight or slightly zigzag | ovate, deltate-ovate, or rarely elliptic-ovate | 7.5–11 mm |
| <i>smallii</i> | Florida | shrub (0.7–2 m), markedly zigzag stems | elliptic, apex acuminate | 8.5–12 mm |
| <i>tithymaloides</i> | Mexico to Surinam and Caribbean | shrub (0.4–3 m), branching at base | elliptic, apex acute | 7.0–14.5 mm |